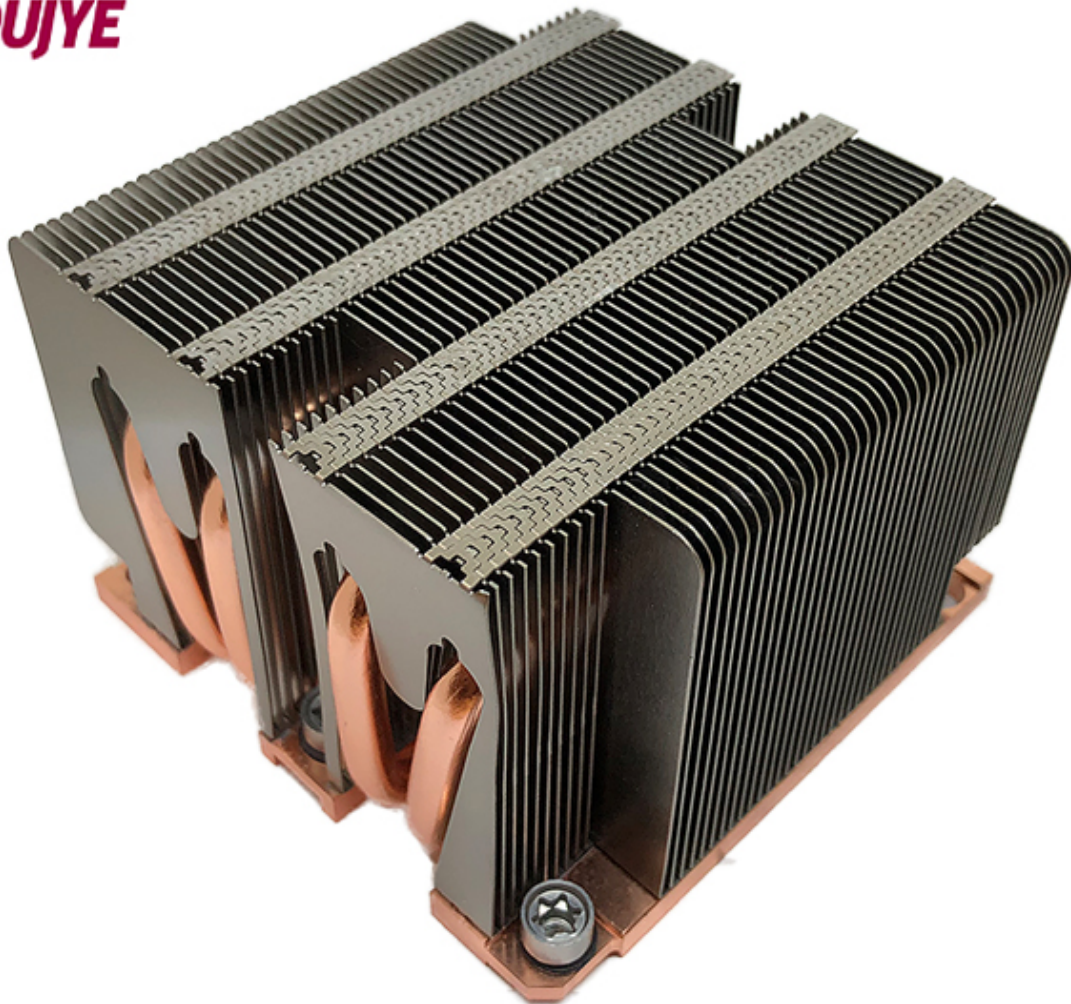


 **JOUJYE**

Product Spec Sheet

B12

 **JOUJYE**



B12

Application :

Recommend for Intel® Xeon® Platinum / Gold Family Processor
(Products formerly Skylake), Socket FCLGA3647

For Square ILM Only

Passive Cooler for 2U Server and up

Overall Specification :

Dimension: 90 x 90 x 64 mm

Weight: 590 g

Material : Aluminum Heatsink, Copper Base with Heatpipes Embedded

Convenient Heat Sink Screw captive mounting

Thermal Grease Shin-Etsu 7762 Pre-printed

Support CPU power up to 205 Watts heat dissipation

Includes Package Carrier for Processor Installation

Active Cooler B12 Thermal Performance Curve :

